



# Effingham Village Recreation Trust

---

Towards a sustainable plan for the  
Trust





## EVRT Purpose

‘For the public benefit, to provide or assist in the provision, support and maintenance of facilities for recreation, mental health and wellbeing for the inhabitants of the area of benefit, in particular through the provision of a village hall and recreation grounds.’

# Our Vision



To provide opportunities for all our residents and user groups to socialise, play, learn and build community through access to safe, modern facilities and programmes.



Healthiness

Happiness

Togetherness



# Our new focus is on 5 Key Areas

## Sport & Recreation



## Education & Lifelong Learning



## Mental & Emotional Wellbeing



## Nature, Ecology, Climate & Habitats



# Our Aims & Objectives

**To create a sustainable community hub.**



Specifically:

1. To protect and develop the assets of the charity
2. Provide safe quality sports, social and recreation facilities across a broad spectrum of activities.
3. To appeal to residents of all ages, abilities and interests in line with our purpose and mission.
4. To promote engagement with the local community and its organisations.
5. To protect and enhance the natural environment.

# Our Strategy

What we will do to achieve our aims



1. Invest appropriately to **maintain our core assets** and identify capital programmes that can over time add value to the charity (Examples 3G pitch, playgrounds, enhancement of woodland and open grassland areas and pitches).
2. Identify **new revenue streams** and partners that can support the trust in its overall mission.
3. **Optimise the return** from existing facilities and work towards their full utilisation.
4. Work with our partners to **deliver a broader range** of activity programmes.
5. Raise the profile of the trust within the community and its organisations.



# Key Elements of The Plan

1. Core maintenance and **renovation** to ensure existing facilities are safe and fit for purpose.
2. To ensure that all licenses include a robust element of **capital replacement funding** and additional strategic investments are recovered over the period of the license.
3. To strengthen the offering of the trust across **our 5 platforms**
4. Deepen the **relationship with current occasional hirers** who offer services consistent with one of the 5 platforms
5. To identify suitable **community events and services** that will attract more 'everyday' and celebratory use of the facilities by the community
6. To be more **proactive with our communication** to the community via updates, interaction with other local 'news' opportunities and social media.



## Core maintenance and renovation (Year 1 Focus)

1. Roof Repairs
2. Tree management – Ash die back and replanting
3. Essential renovation of village rooms
4. Car park extensions to Scout Hut area including safe play area around Scout Hut
5. Pitch optimisation and upgrades to facilitate more multi-sport use
6. Playground repairs to junior play equipment – replacement of Play Trail



**To strengthen the offering of the trust across our  
five platforms**

# Sport & Recreation

## External Pitches

- FA/FF partnership to develop our Footballing activities and facilities (Year 1)
- Improve facilities for our Vets (pitch and lighting) (Year 1)
- Provision for girls and women. (Years 1-2)
- MINI-MUGA and Community Play Zone (Year 2-3)
- Explore opportunities for additional full size 5G pitch (Year 3-4)



# Sport & Recreation

## Indoor Activities

- Improve Hall facilities (Year 1)
- Identify local partners to host new clubs (WI/U3A) (Year 2)
  - Art & Crafts
  - Chess and Board Games
  - Music, Dance and Choral groups
  - Develop partnerships to offer more Yoga, Pilates and Keep Fit





# Lifelong Learning

- Improve facilities for indoor learning and workshops
  - Renovation of village rooms (Year 1)
- Potential classes (years 1-3)
  - Language classes
  - Art & History
  - Creative writing / Poetry
  - Astronomy / Sciences
  - Woodturning / craft / carpentry. Home DIY
- Identify a strategic partner to support development of a lifelong learning programme of classes, workshops and activities (SCC / U3A) (Year 2-3)





# Emotional & Mental Wellbeing

- Identify a partner (Mary Frances Trust) to develop a programme of activities that support emotional and mental health and well being (Year 1-2)
- Trial Nature Nurture programme (Oct 2023)
- Improve facilities to host potential programme (Year 2)
- Identify opportunities for outdoor activities to support the overall objective (Year 1-2)
  - ‘Green prescription’
  - Community gardening
  - Tranquility garden
  - Sensory / tranquility trail/
  - Bird / nature watching



# Nature, Ecology, Climate and Habitats

- To undertake an ecology and habitats audit (Year 1)
- Replanting to create new woodlands and wild meadow spaces to encourage wildlife (From Nov 2023)
- Create CIII commemorative woodland nature trail (Year1-2)
- Trial Forest School, Outdoor learning partnerships with local schools (Year 1)
- Design and construct natural play, learn, relax and explore areas and activities within the grounds (Year 2-3)





# Community

- Renovate the Village rooms to support community usage (Year 1)
  - Club spaces
  - Warm hub & social space
  - Library and Heritage Centre
  - Learn and share activities, talks and workshops ‘classroom’
  - Menshed / Repair Café (Year 1)
- Trial community ‘events’ (Year 1-2)
  - National celebrations
  - Easter
  - Guy Fawkes / Diwali
  - Christmas (December 16<sup>th</sup> 2023)



## Potential 'Masterplan'

1. Natural Woodland Garden Trail
2. Tranquillity wildflower garden
3. Additional 3G pitch
4. Community Garden & outdoor classroom
5. Community Play area
  - A. Café
  - B. Junior Activity Trail
  - C. Toddler Play
  - D. MINI-MUGA
6. Additional car parking spaces







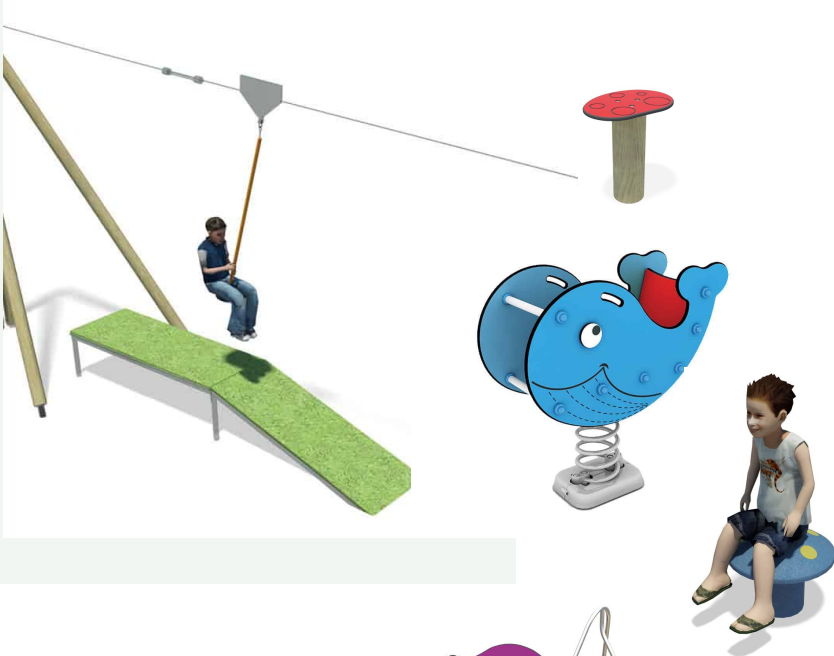
## The New Playground Adventure Trail

**Modular units that can be added to year after year**

- The current junior playground trail will be replaced with a modern adventure playground.
- A slide and some swings will be retained
- The existing toddler playground will be relocated to the community play area.
- Annual 'New Additions' to the play area.



## Potential Future Additions

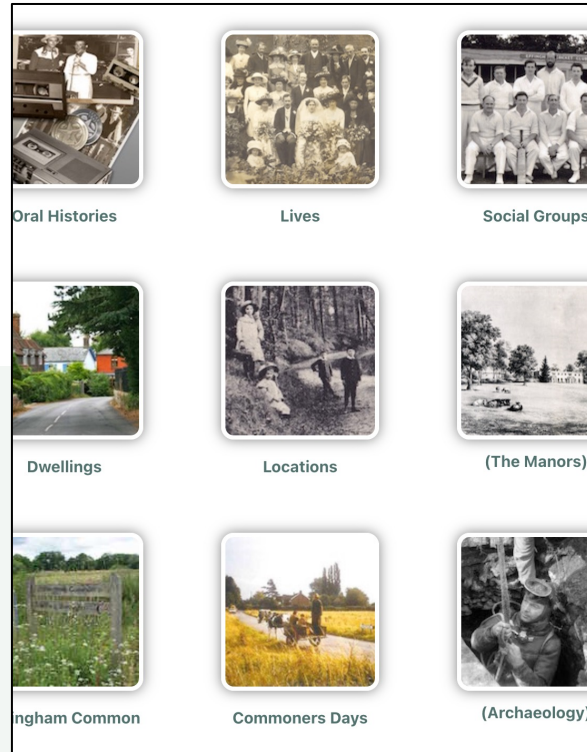


# The Village Room Renovation



## Menshed / Repair Cafe

Planned for December 2023



## Heritage Centre

December 2023



## Flexible Activity Space

December 2023



# The Proposed Multi Use Games Area (MUGA)

To form an integral part of new and updated community meet and play zone



- The MUGA is intended for general use by the community post school and provides a safe playing space for children whilst parents relax at the café.
- During the day and in the evening it can be hired out to clubs for use (5-a-side, Netball, Hockey, Tennis, Pickleball, Basketball)
- It will be a useful addition for holiday clubs and the nursery too and an additional training facility for our clubs



# 2024 -2025 Projects



## Community Play Space

MUGA £60-70,000

Funded from FF Grant & EVRT / GBC  
Crowdfunder projects



## Additional 3G Pitch

Funded from FA /FF Grants



## Woodland Trail & Tranquillity Garden

£20,000 funded from EVRT / Grants

# Agenda

1. Chairman's welcome
2. Introductions to the trustee and board
3. Apologies for Absence
4. Minutes of EVRT AGM for financial year 2021-2022
5. Report & Financial statement of the Trustee for Financial Year 2020-21
6. EVRT Strategy and plan for the future of the KGV
7. Q&A
8. Exhibition and refreshments – opportunity to talk to the trustee and board members

Thank  
you

